

BRIDGE OVER SAVA RIVER IN SREMSKA RACA

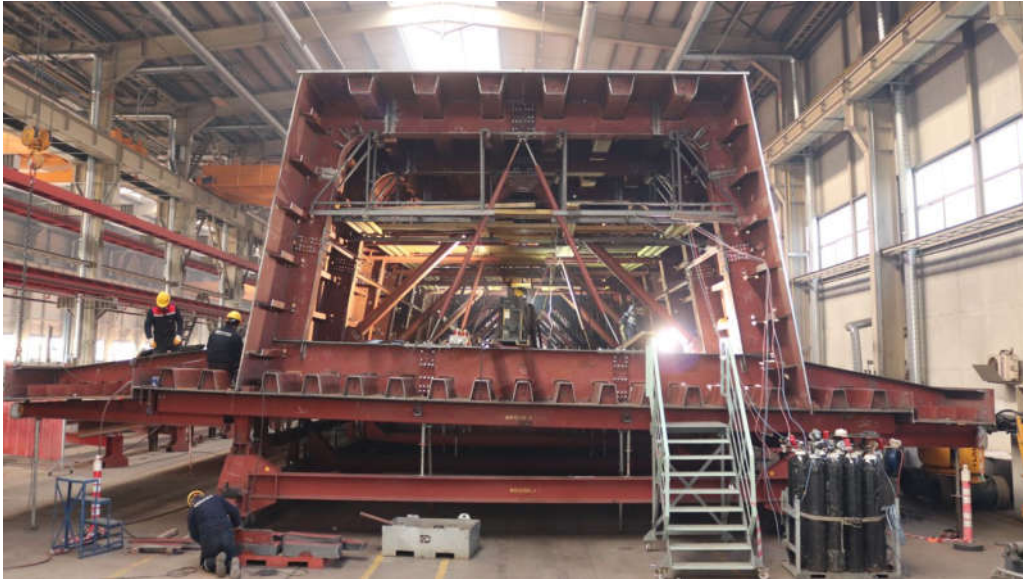


PROJECT NAME	: KUZMIN-SREMSKA HIGHWAY SREMSKA RACA SAVA BRIDGE
CLIENT	: ROAD OF DERBIA
MAIN CONTRACTOR	: TAŞYAPI SERBIA BRANCH
CONTRACT DATE	: 07.04.2020
TOTAL LENGTH	: 330 M
DECK WIDTH	: EACH ~15M WIDE DECK WITH 2 TRAFFIC LANES
TOTAL QUANTITY	: 5.500 TON

The bridge over Sava River on the highway Kuzmin-Sremska Rača (serbia) consists of two neighbour bridge structures; each ~15m wide deck with 2 traffic lanes. The main bridge across sava river, 330m length, having spans 90+150+90m, consists of 2 steel box beams with 5m constant depths. The trapezoidal single-cell box section, with both-sided cantilevers, has upper flange consisting orthotropic plate. Entire bridge steel structure (5500t) was fabricated in DOKA Endustri factory in Sakarya/Hendek Turkiye. Two box beams were divided in 23 blocks each, consisting of 7 segments per block. After trial assembly, blocks dissembled in segments were transported by long trucks from factory to construction site. The 15m length 21 blocks (100-174t weight) & 7,5m length 2 blocks were assembled at site. Afterwards, the blocks linked together by welding on the concrete platform, were protected for corrosion protection and prepared for incremental launching. Main steel bridge structure was fabricated, transported, assembled and erected in 11 months.

BRIDGE OVER SAVA RIVER IN SREMSKA RACA

FABRICATION WORKS



After fabrication and trial assembly completion of bridge decks were shipped to site by trucks.



BRIDGE OVER SAVA RIVER IN SREMSKA RACA

FABRICATION WORKS

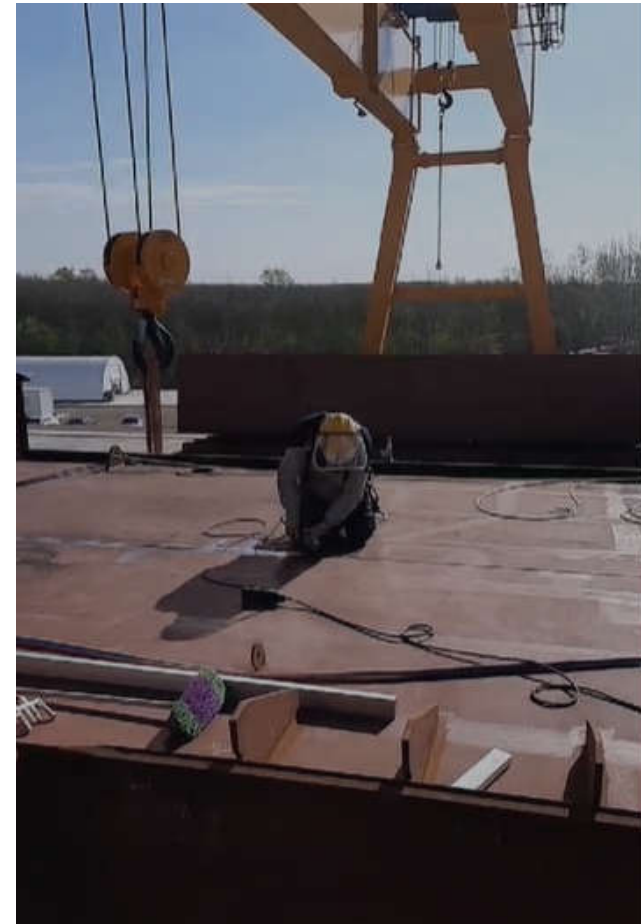


BRIDGE OVER SAVA RIVER IN SREMSKA RACA
TRANSPORTATION



BRIDGE OVER SAVA RIVER IN SREMSKA RACA

SITE ASSEMBLY WORKS



BRIDGE OVER SAVA RIVER IN SREMSKA RACA SITE ASSEMBLY WORKS

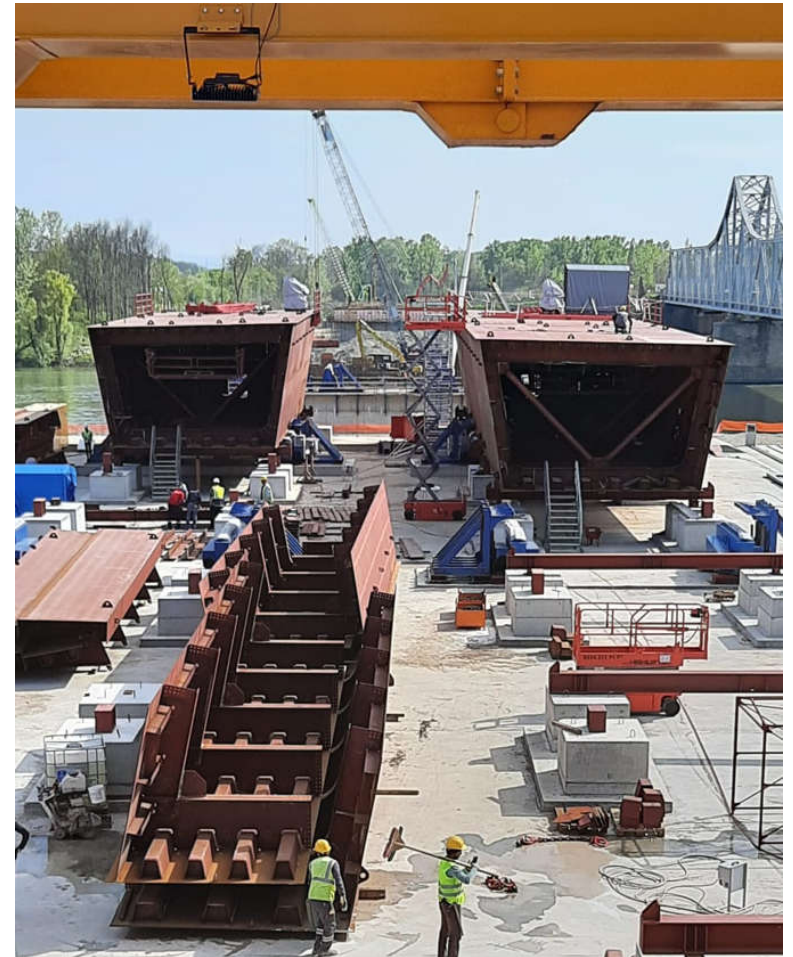


The block modules arriving at the project site were combined into blocks in the gas submerged arc welding building temporarily established on the site, and placed on the platform for block assembly before incremental launching process.



BRIDGE OVER SAVA RIVER IN SREMSKA RACA

SITE ASSEMBLY WORKS



BRIDGE OVER SAVA RIVER IN SREMSKA RACA

SITE ASSEMBLY WORKS



BRIDGE OVER SAVA RIVER IN SREMSKA RACA

SITE ASSEMBLY WORKS

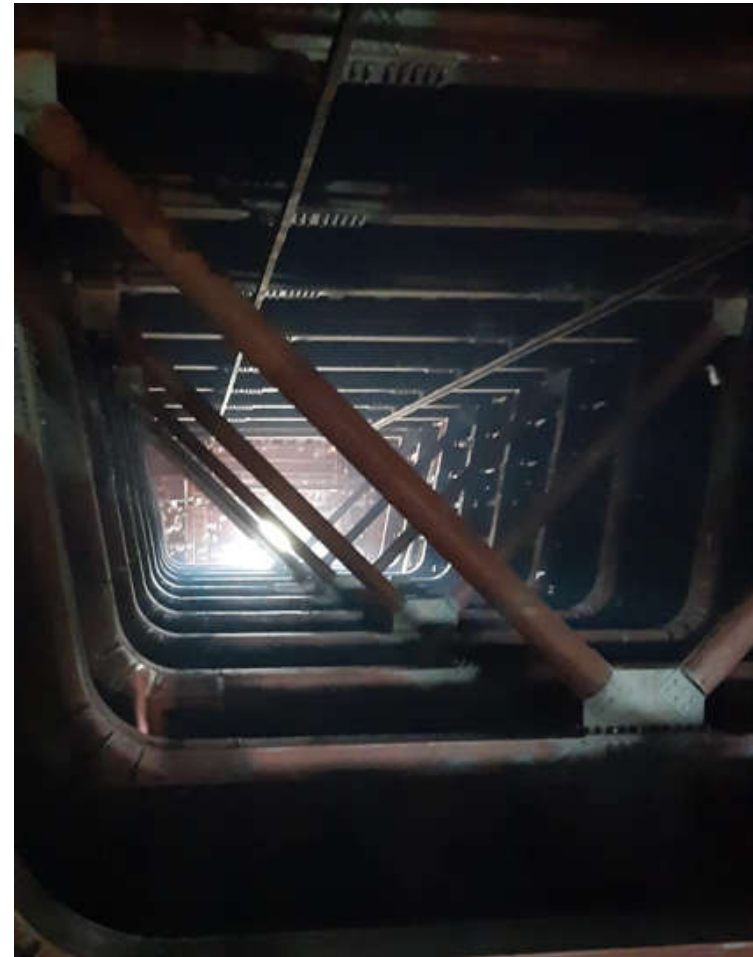


Sandblasting and anti-corrosion protection coating were performed for the assembled block in the paint building temporarily established on the site.



BRIDGE OVER SAVA RIVER IN SREMSKA RACA

SITE ASSEMBLY WORKS



BRIDGE OVER SAVA RIVER IN SREMSKA RACA

SITE ASSEMBLY WORKS





BRIDGE OVER SAVA RIVER IN SREMSKA RACA

SITE ASSEMBLY WORKS





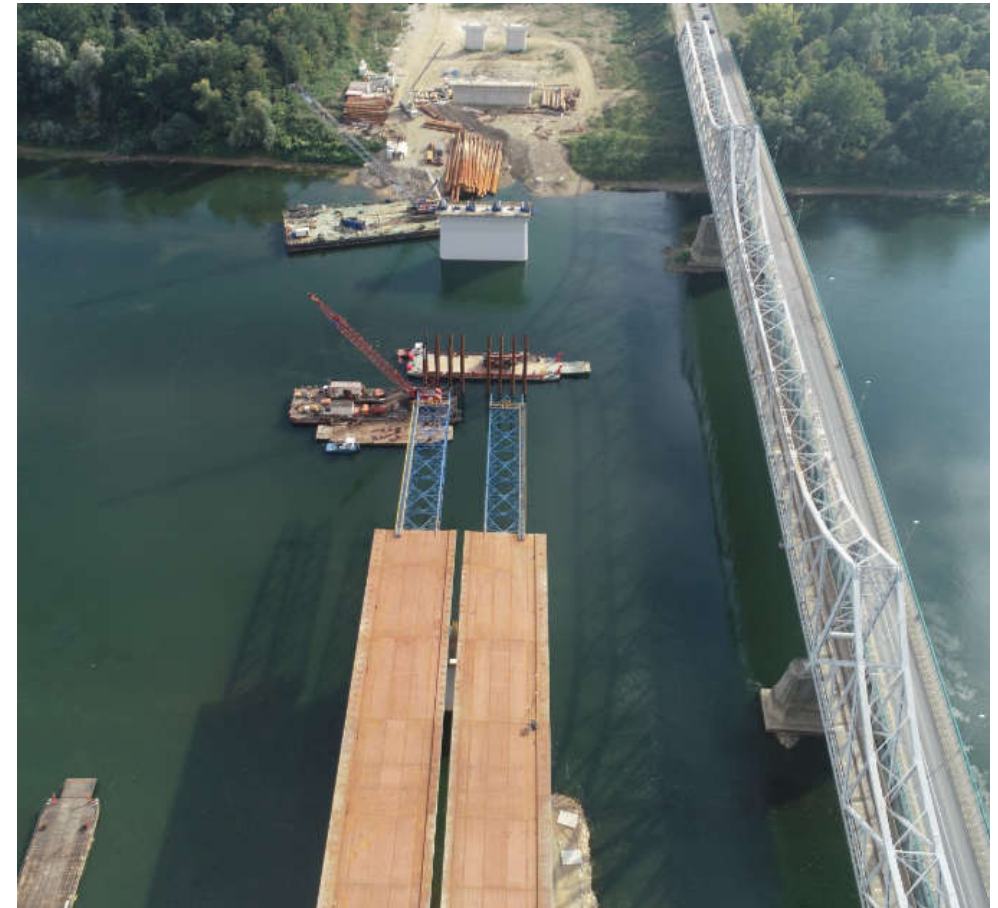
BRIDGE OVER SAVA RIVER IN SREMSKA RACA

SITE ASSEMBLY WORKS



BRIDGE OVER SAVA RIVER IN SREMSKA RACA

SITE ASSEMBLY WORKS



BRIDGE OVER SAVA RIVER IN SREMSKA RACA

SITE ASSEMBLY WORKS



BRIDGE OVER SAVA RIVER IN SREMSKA RACA

SITE ASSEMBLY WORKS



BRIDGE OVER SAVA RIVER IN SREMSKA RACA

SITE ASSEMBLY WORKS



BRIDGE OVER SAVA RIVER IN SREMSKA RACA



BRIDGE OVER SAVA RIVER IN SREMSKA RACA



BRIDGE OVER SAVA RIVER IN SREMSKA RACA



BRIDGE OVER SAVA RIVER IN SREMSKA RACA

