

## **BELGRAD WATERFRONT VIDIKOVAC PEDESTRIAN BRIDGE**

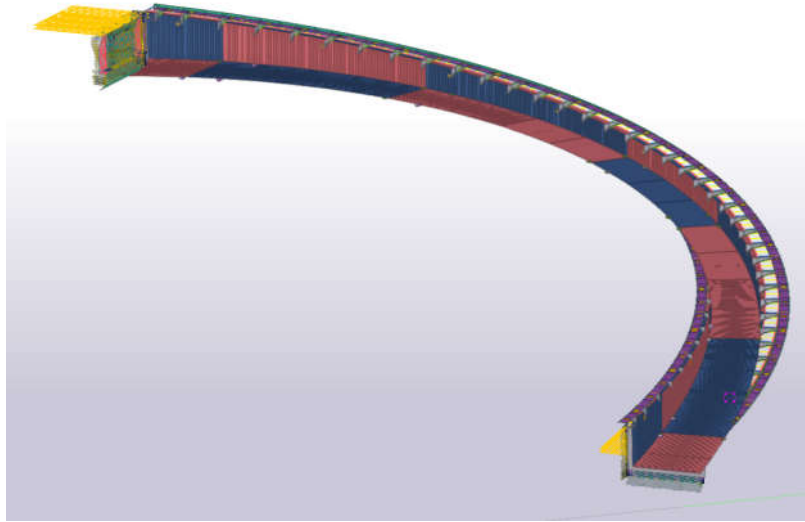
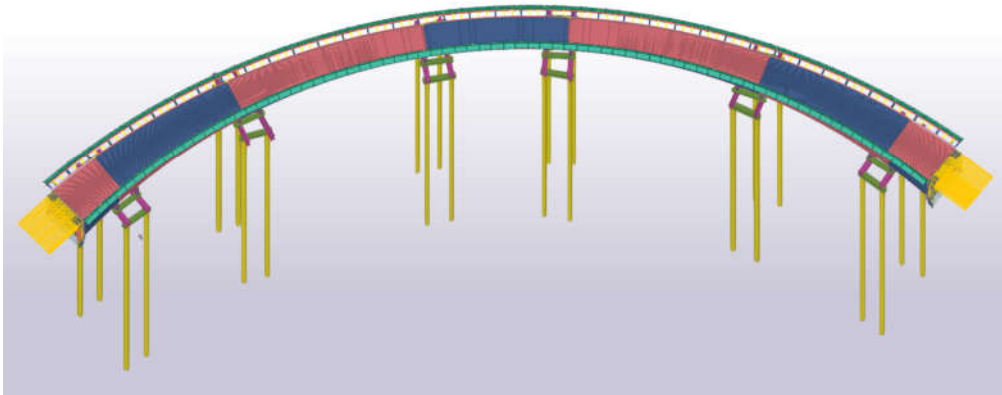


View after opening

PROJECT NAME	: BW VIDIKOVAC BRIDGE
CLIENT	: BELGRADE WATERFRONT
MAIN CONTRACTOR	: MILLENNIUM TEAM D.O.O.
CONTRACT DATE	: 17.05.2022
TOTAL LENGTH	: 116 M
DECK WIDTH	: 3.37 M – 4.18 M
TOTAL QUANTITY	: 376 TON

BW Vidikovac Pedestrian Bridge built on the Sava River in front of Kula Belgrade, in accordance with the contract signed between Serbian Company Millennium Team and DOKA Endustri Ltd. Şti. On may 17, 2022, within the scope of the Belgrade Waterfront Project in Belgrade, Serbia and opened into service in April 2024.

## **BELGRAD WATERFRONT VIDIKOVAC PEDESTRIAN BRIDGE**



Bridge is curved girder steel structure with a span of 116 meters , without columns in the water, which cantilever over the river for almost 20 meters. Bridge structure is composed of seven hanging steel blocks that form a pedestrian path of variable width, from 4 meters in the middle to 5 meters in contact with concrete block. Bridge is installed over temporary piers and released from temporary piers after finishing of installation

## **BELGRAD WATERFRONT VIDIKOVAC PEDESTRIAN BRIDGE**



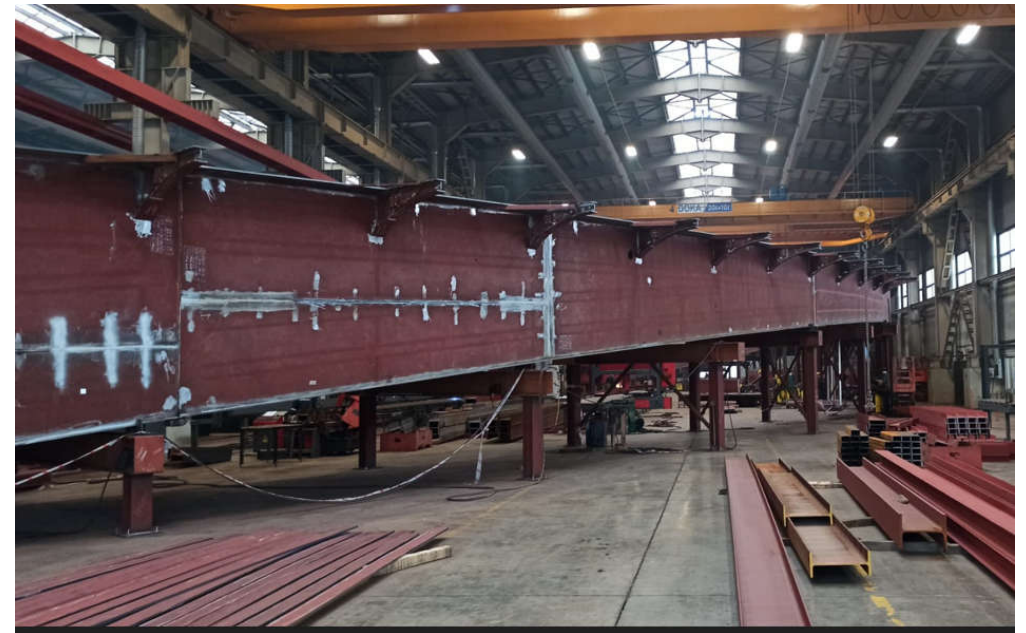
The bridge blocks were manufactured in seven modules in DOKA factory in Sakarya Hendek, and their painting was completed and shipped by trucks to the pre-assembly site in Belgrade, Serbia. The blocks vary between 6 meters and 24 meters.





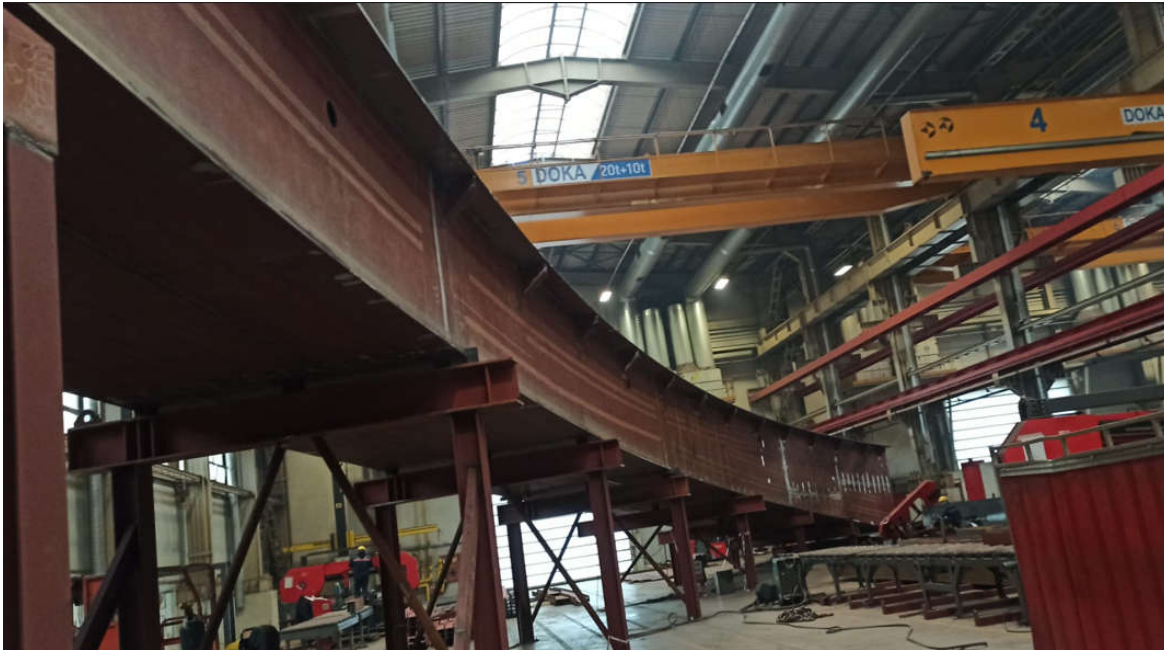
# **BELGRAD WATERFRONT VIDIKOVAC PEDESTRIAN BRIDGE**

Photos from factory during manufacturing phase



# BELGRAD WATERFRONT VIDIKOVAC PEDESTRIAN BRIDGE

Photos from DOKA factory during manufacturing phase

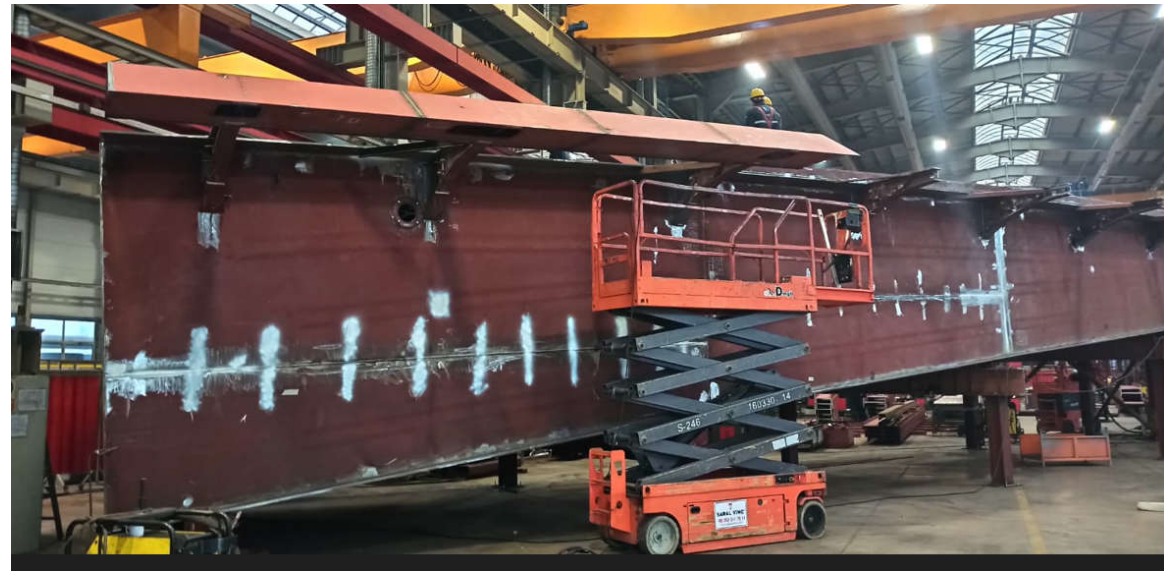






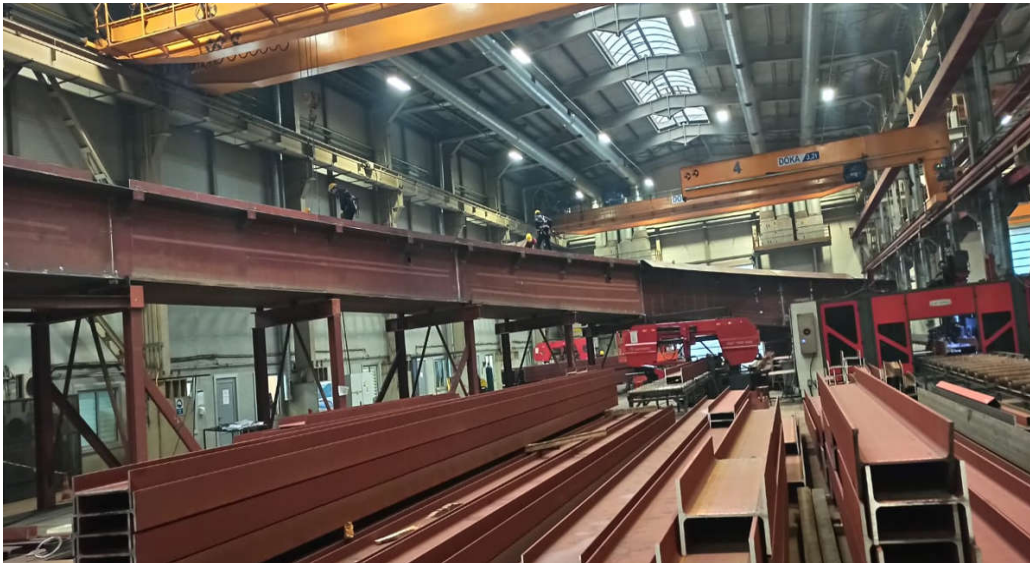
# BELGRAD WATERFRONT VIDIKOVAC PEDESTRIAN BRIDGE

Photos from factory during manufacturing phase



# **BELGRAD WATERFRONT VIDIKOVAC PEDESTRIAN BRIDGE**

Photos from factory during manufacturing phase

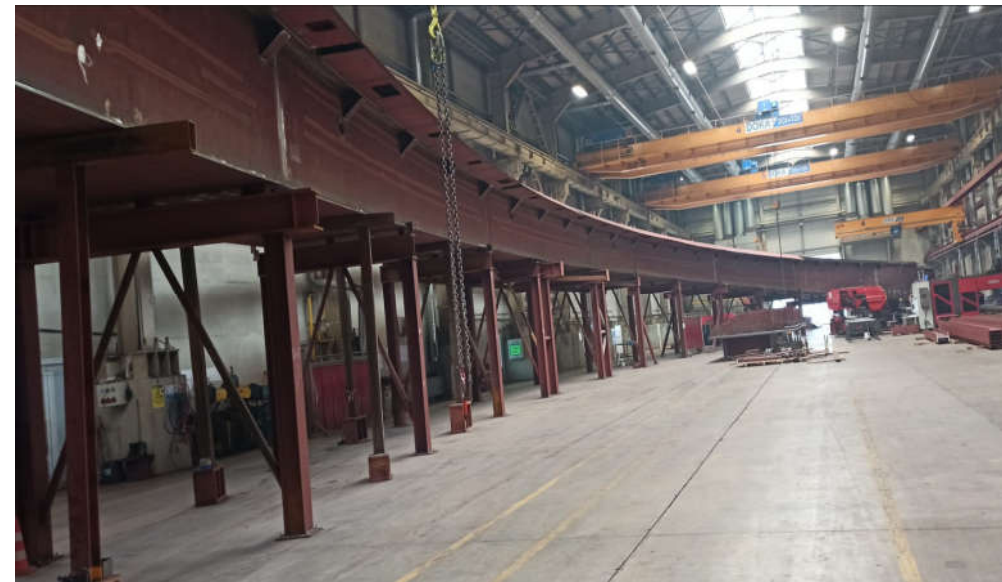






# BELGRAD WATERFRONT VIDIKOVAC PEDESTRIAN BRIDGE

Photos from factory during manufacturing phase





# **BELGRAD WATERFRONT VIDIKOVAC PEDESTRIAN BRIDGE**

Photos from factory during Sandblasting&Painting phase



# BELGRAD WATERFRONT VIDIKOVAC PEDESTRIAN BRIDGE

Photos from factory during Sandblasting&Painting phase





# BELGRAD WATERFRONT VIDIKOVAC PEDESTRIAN BRIDGE

Photos from factory during Sandblasting&Painting phase





## **BELGRAD WATERFRONT VIDIKOVAC PEDESTRIAN BRIDGE**

Photos from Pre-Assembly site in Belgrade



Due to the carrying capacity of the bridge transportation block dimensions, the modules and consoles were transported separately and the assembly works were carried out at the pre-assembly site in Belgrade. 7 blocks, whose pre-assembly and touch painting works were completed and ready for final assembly, were transported to the project site by barge over the Sava River and assembled on temporary piers by lifting of floating crane.

# BELGRAD WATERFRONT VIDIKOVAC PEDESTRIAN BRIDGE

Photos from Pre-Assembly site in Belgrade





# BELGRAD WATERFRONT VIDIKOVAC PEDESTRIAN BRIDGE

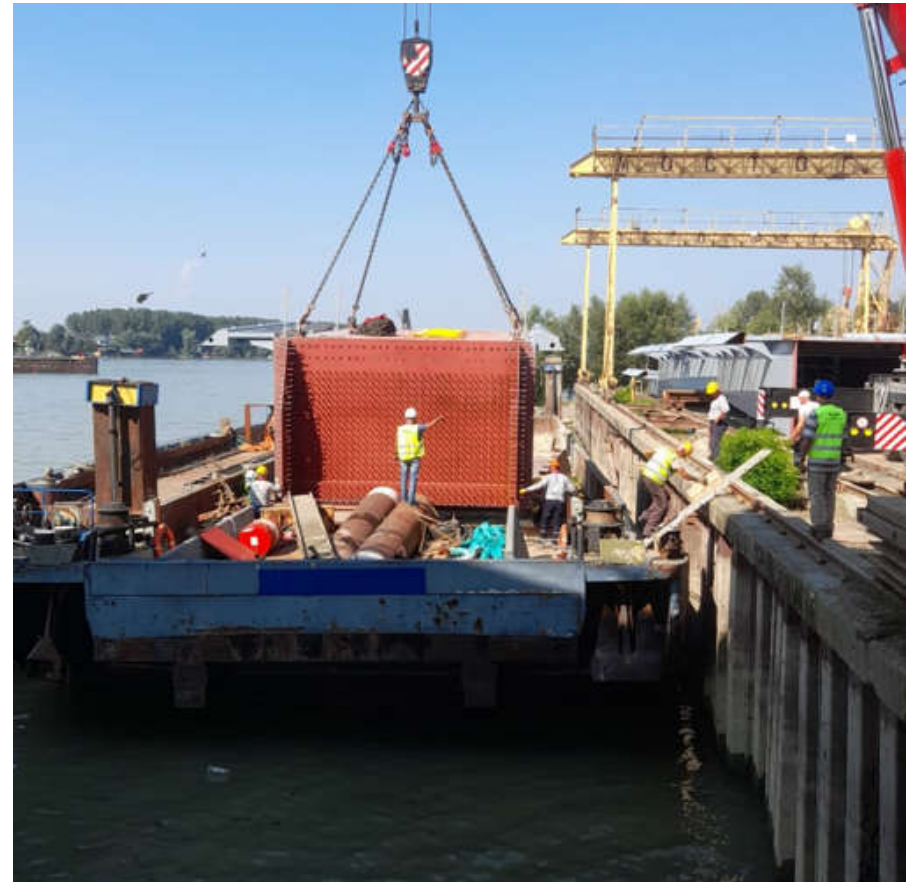
Photos from Pre-Assembly site in Belgrade





# **BELGRAD WATERFRONT VIDIKOVAC PEDESTRIAN BRIDGE**

Photos from transportation from Pre-Assembly site to Project site



# **BELGRAD WATERFRONT VIDIKOVAC PEDESTRIAN BRIDGE**

Photos from transportation from Pre-Assembly site to Project site



# **BELGRAD WATERFRONT VIDIKOVAC PEDESTRIAN BRIDGE**

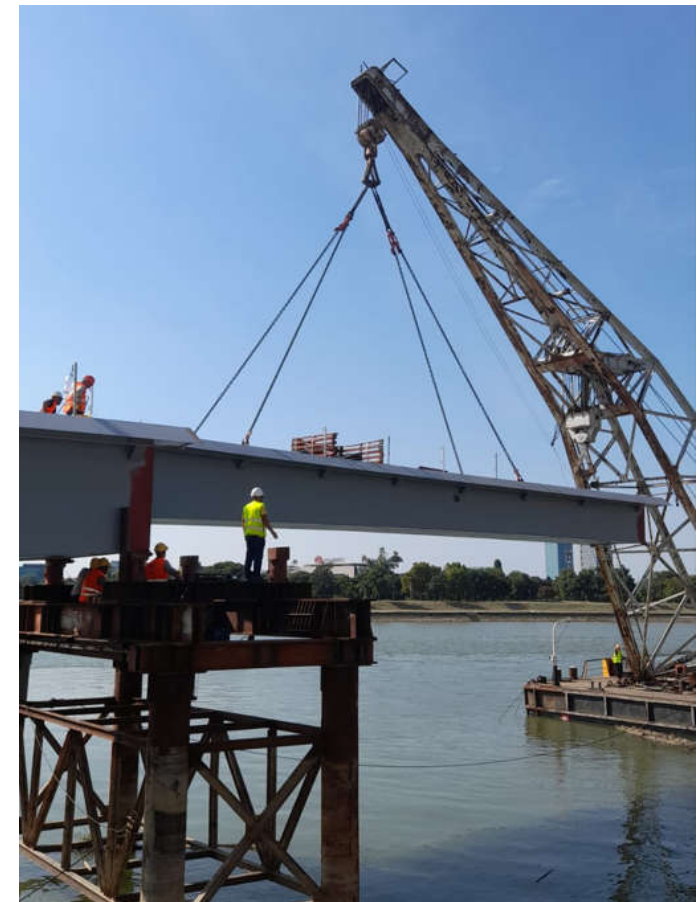
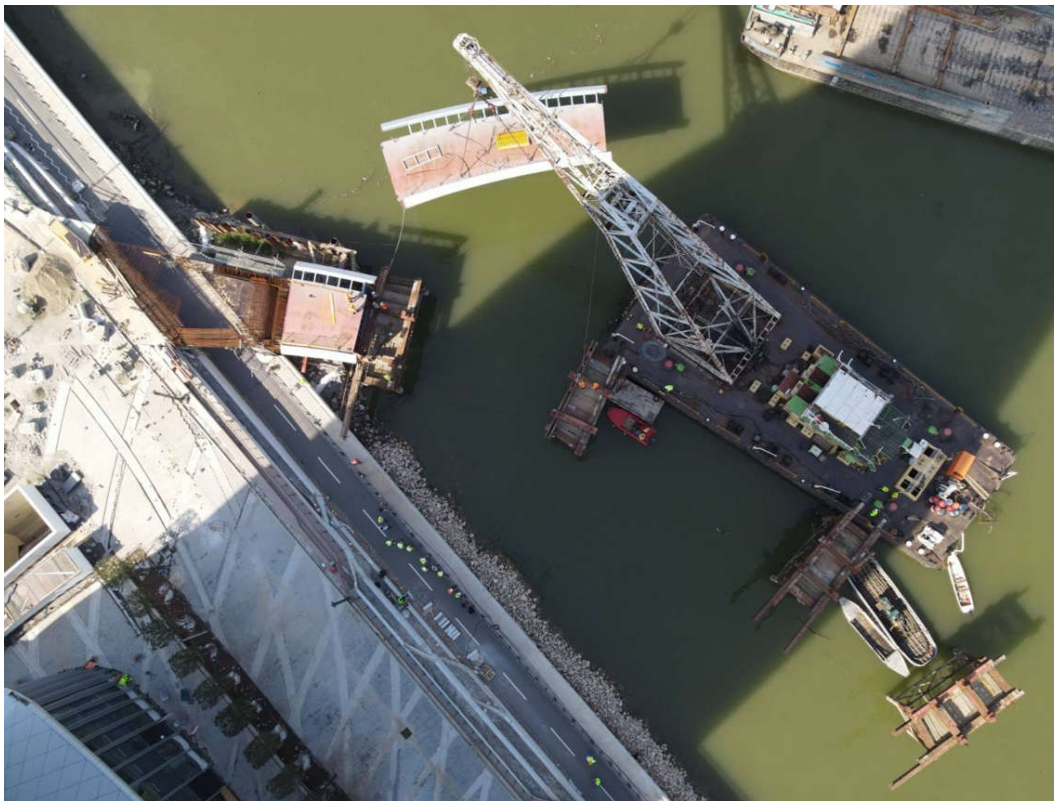
Photos from Installation Phase





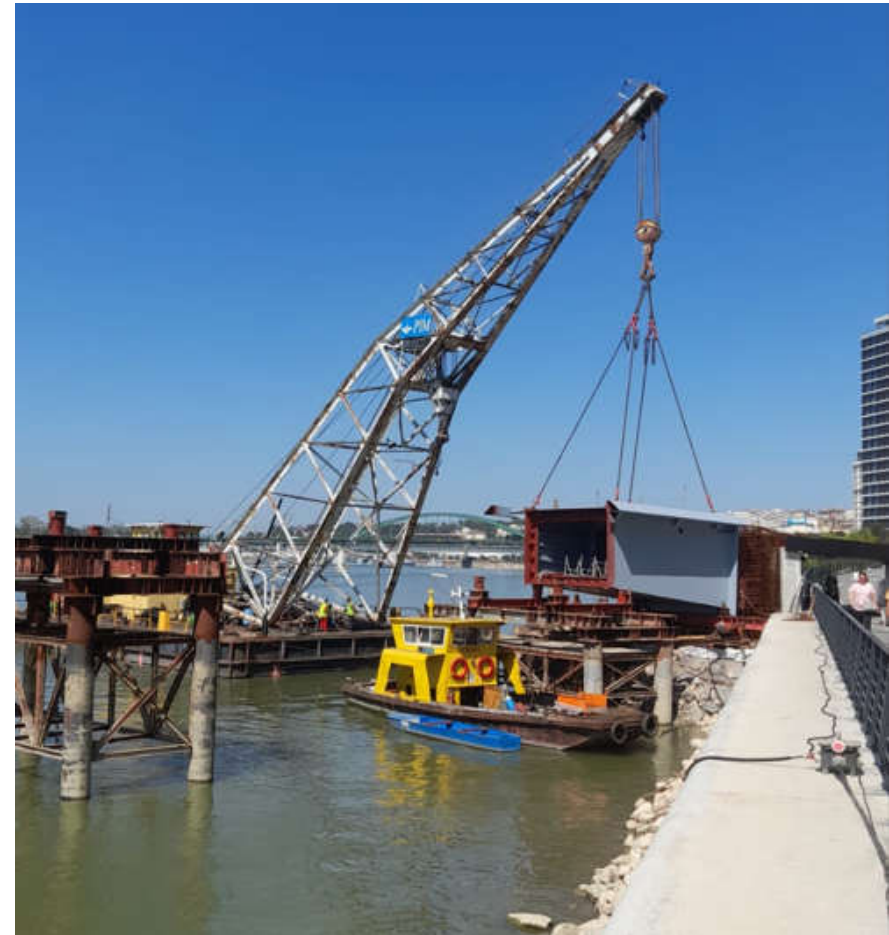
# **BELGRAD WATERFRONT VIDIKOVAC PEDESTRIAN BRIDGE**

Photos from Installation Phase



# **BELGRAD WATERFRONT VIDIKOVAC PEDESTRIAN BRIDGE**

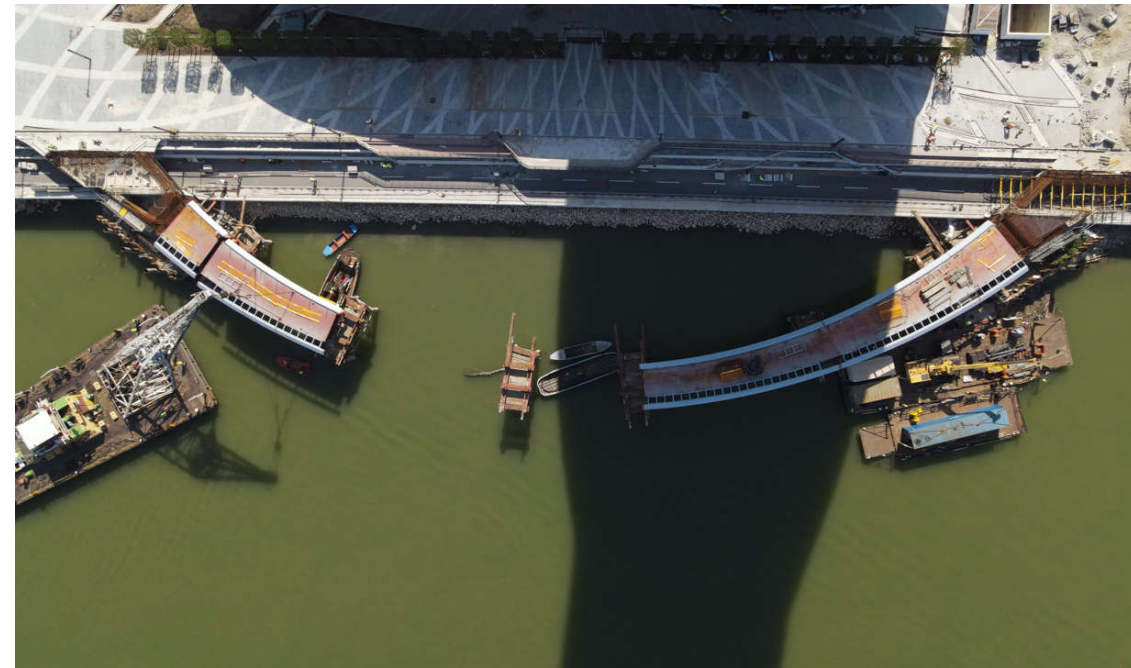
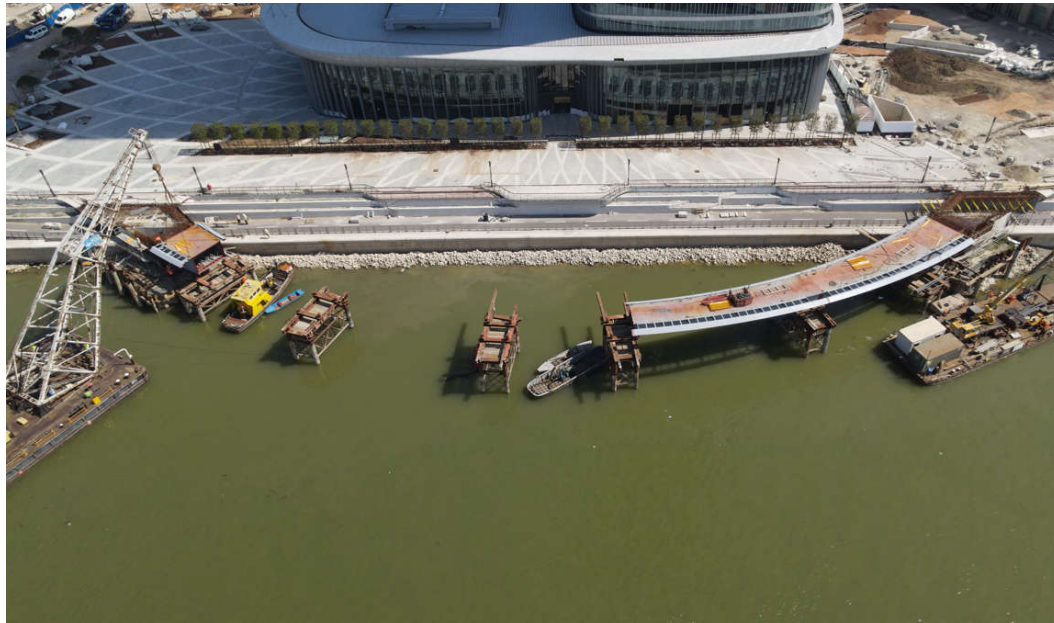
Photos from Installation Phase





# **BELGRAD WATERFRONT VIDIKOVAC PEDESTRIAN BRIDGE**

Photos from Installation Phase

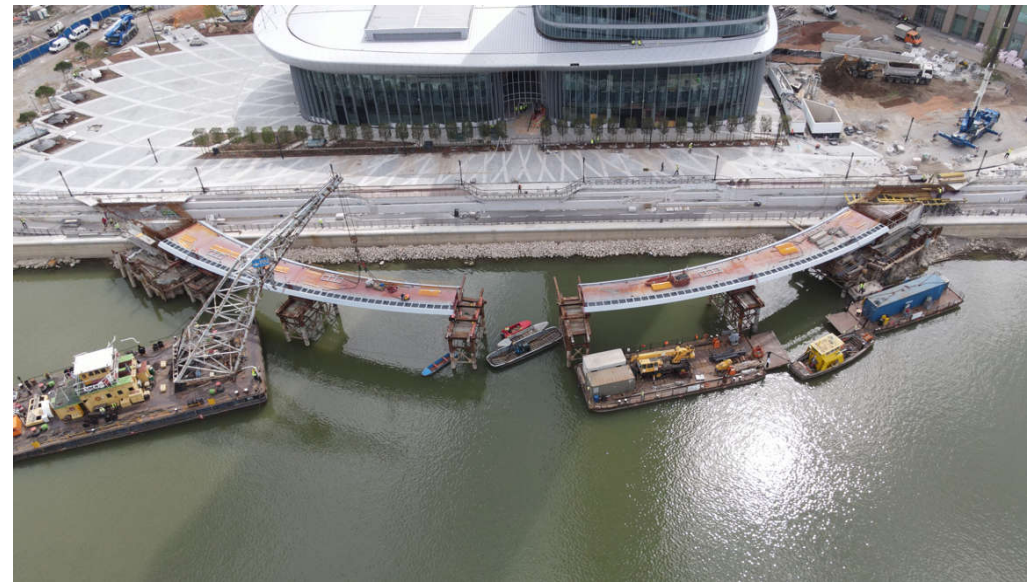
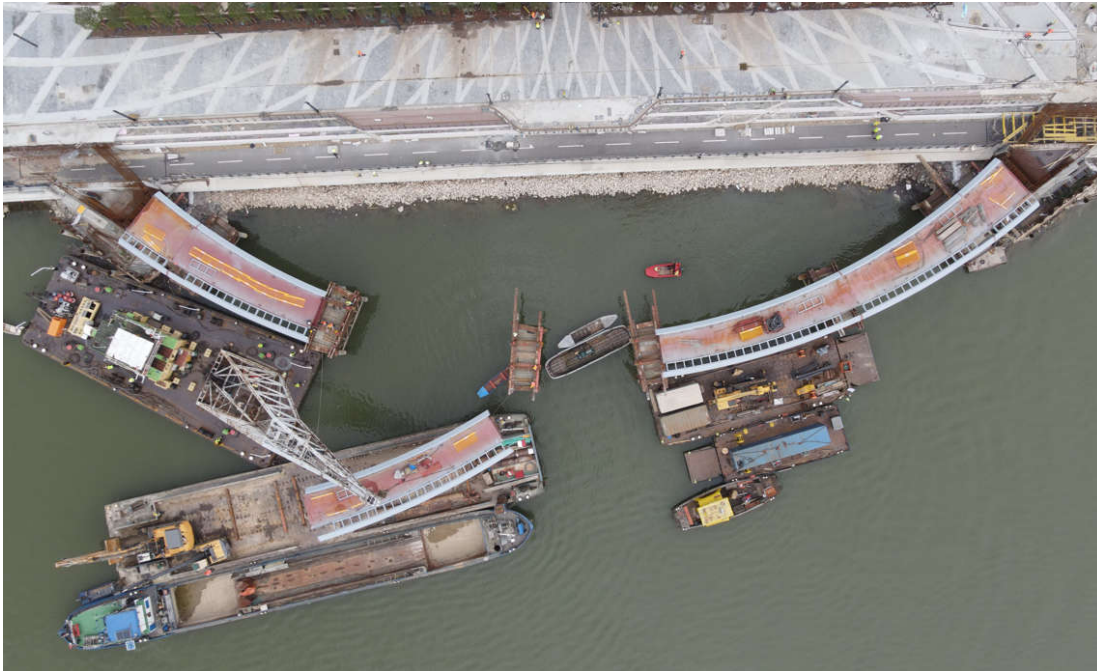






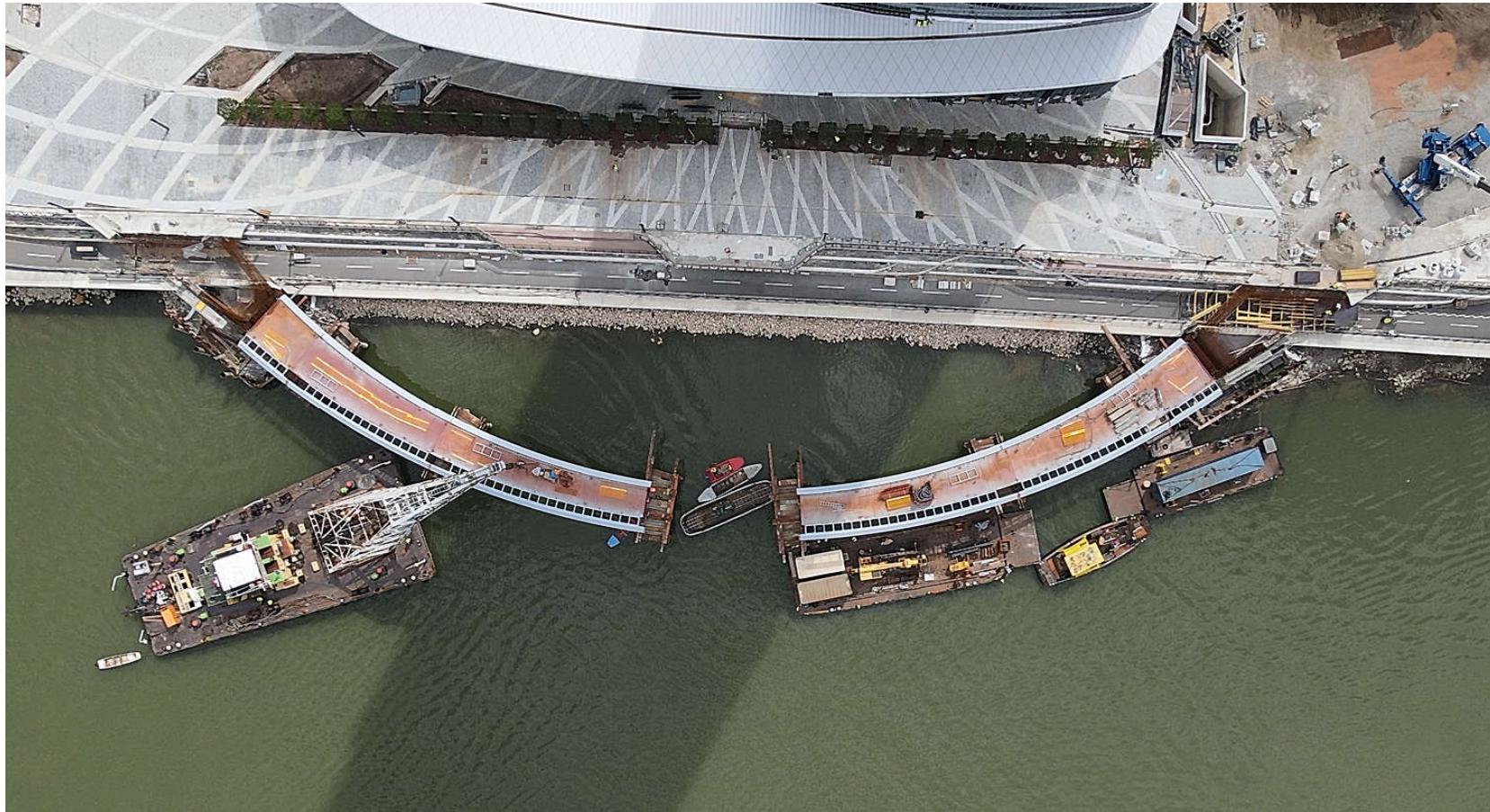
# BELGRAD WATERFRONT VIDIKOVAC PEDESTRIAN BRIDGE

Photos from Installation Phase



# **BELGRAD WATERFRONT VIDIKOVAC PEDESTRIAN BRIDGE**

Photos from Installation Phase







# BELGRAD WATERFRONT VIDIKOVAC PEDESTRIAN BRIDGE

Photos from Installation Phase





# **BELGRAD WATERFRONT VIDIKOVAC PEDESTRIAN BRIDGE**

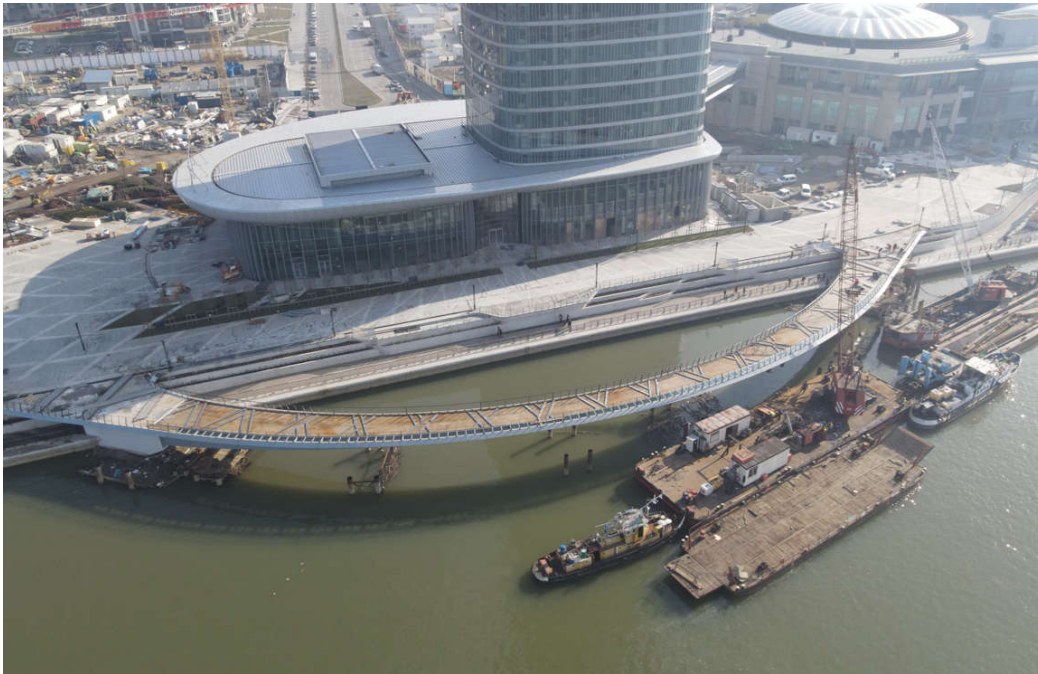
Photos from Installation Phase





# BELGRAD WATERFRONT VIDIKOVAC PEDESTRIAN BRIDGE

Photos from Installation Phase







# BELGRAD WATERFRONT VIDIKOVAC PEDESTRIAN BRIDGE





# BELGRAD WATERFRONT VIDIKOVAC PEDESTRIAN BRIDGE

