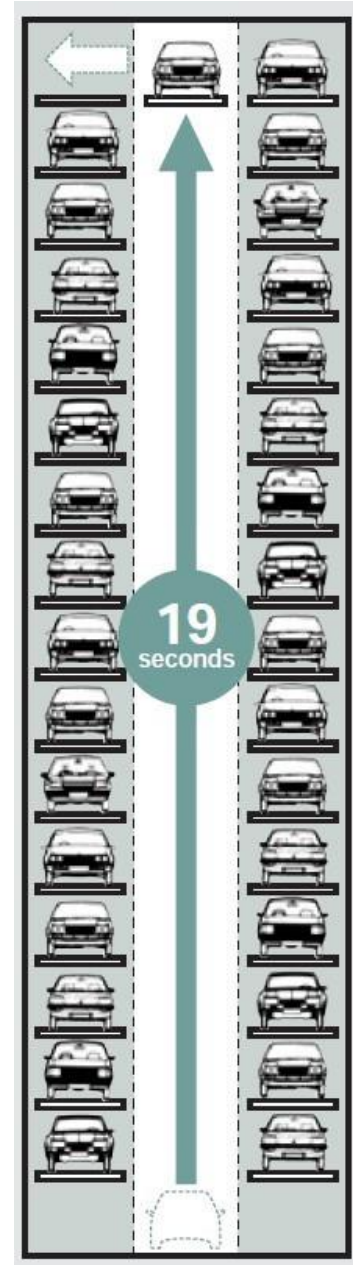


DOKA provides a comprehensive solution to urban parking challenges with its fully automated TOWER PARK system, designed to maximize efficiency in city centers.



DOKA AUTOMATED PARKING SYSTEMS was established in 2018 through the collaboration of DOKA Industry, founded in 1983 in Istanbul, and FUJI HENSOKUKI, a Japanese company established in 1947. With over 50 years of experience, FUJI HENSOKUKI has manufactured and installed 1,500 multi-level automated parking systems across Japan.

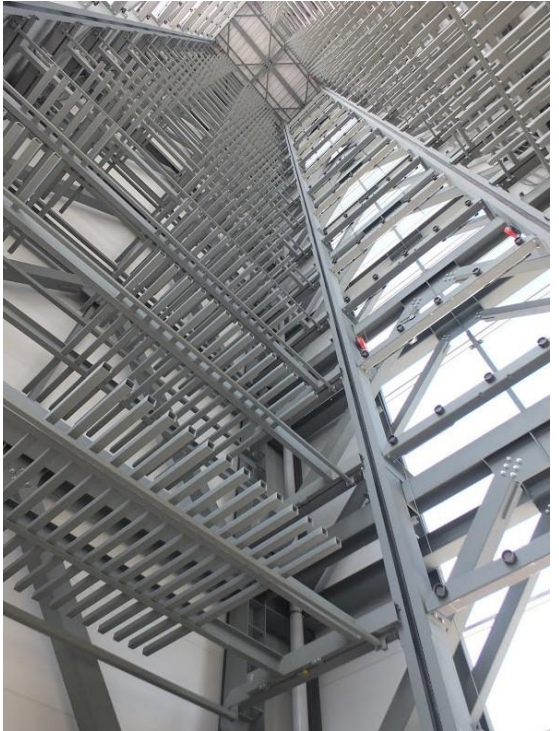
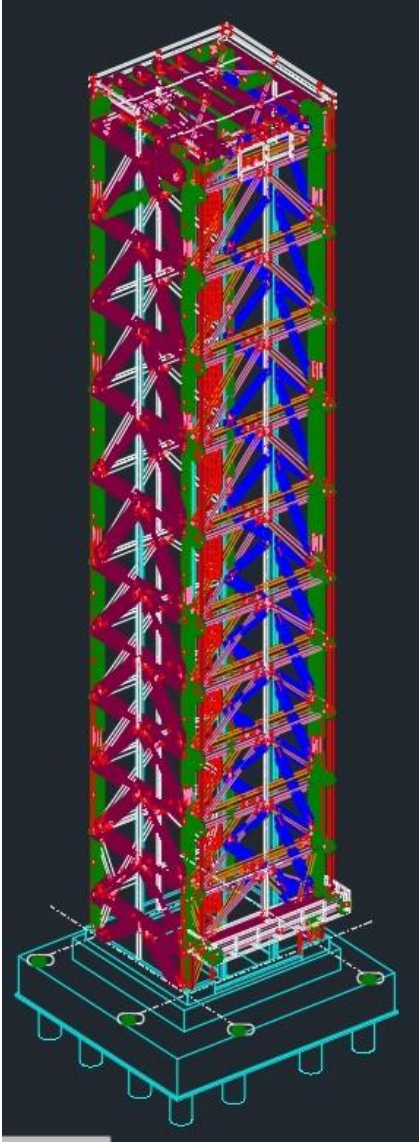
DOKA implemented Turkey's first TOWER PARK system in Hendek, Sakarya.



The parking system, with a capacity of 40 vehicles, was completed and commissioned in December 2017.



# Snapshots from Various Phases of the TOWER PARK System in Hendek:

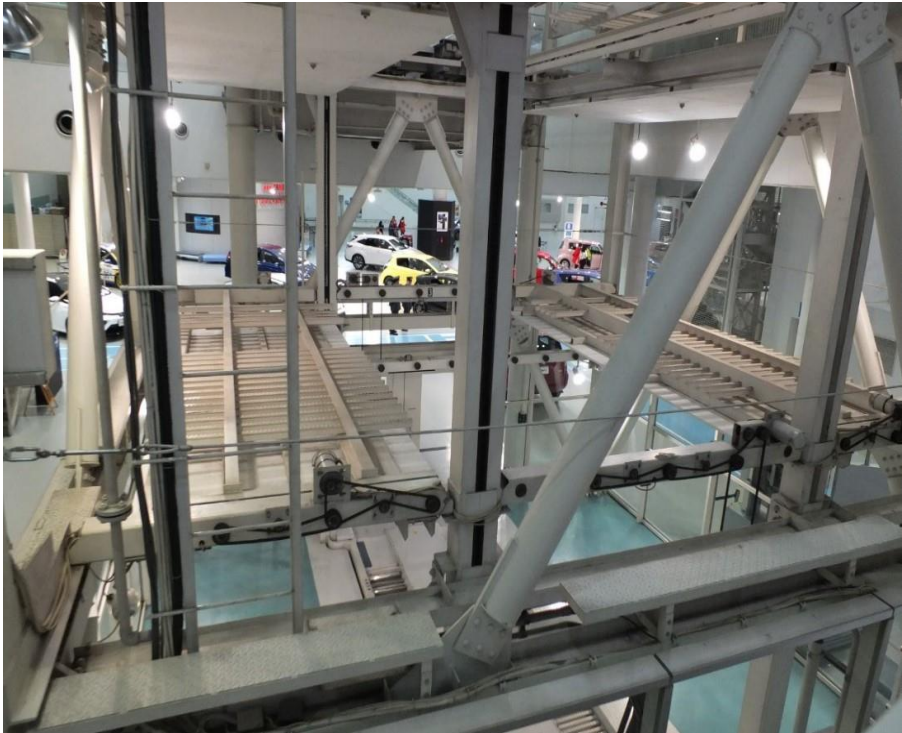




Examples of TOWER PARK Projects Completed in Japan:



Mercedes Benz (Tokio)



Toyota Mega City (Tokio)



Richmond Otel (Nagoya)



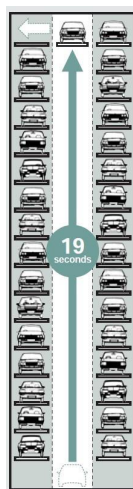
NPC Quick Parking (Nagoya)

## Technical Specifications of the TOWER PARK System:

- *Efficient Design & Cost Savings:* The comb-like pallet system optimizes space utilization, reducing both investment and operational costs significantly.

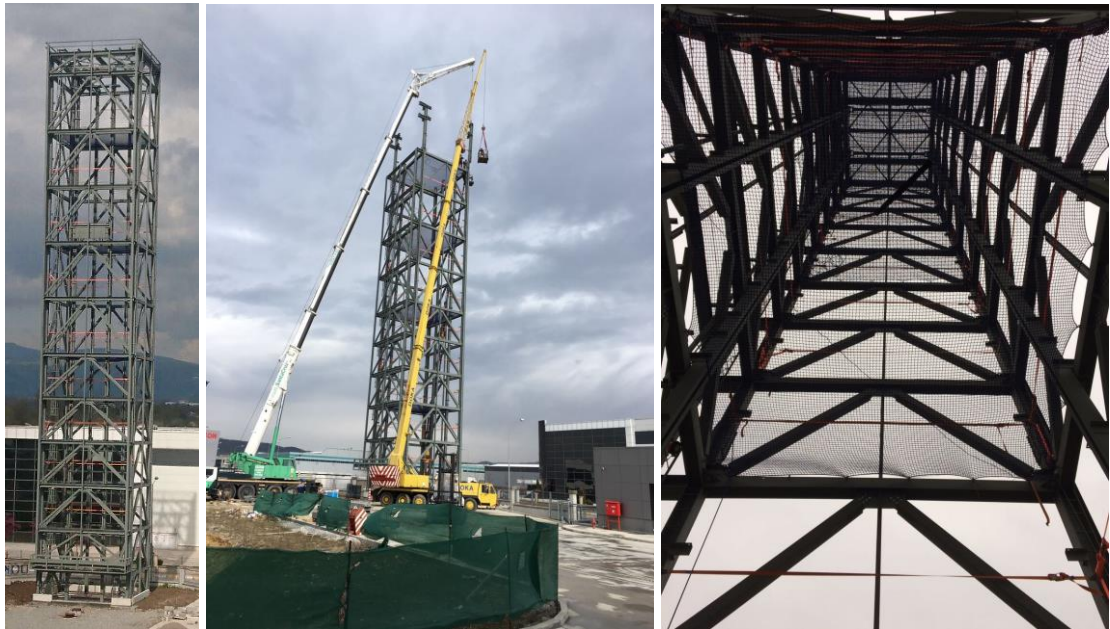


- *High-Speed Operation:* The system operates at 100 meters per minute, enabling vehicle parking in just 19 seconds and retrieval in a maximum of 52 seconds. Thanks to advanced comb technology, it functions smoothly and vibration-free, eliminating noise pollution.





- **Earthquake-Resistant Structure:** The carrier system is engineered to withstand strong earthquakes, utilizing high-strength steel elements designed specifically for high-rise structures. This ensures the TOWER PARK system remains operational even after major seismic events.



- Special mechanical solutions are used to protect both the steel structure and the vehicles inside.



- The TOWER PARK system is designed for an optimum capacity of 40 vehicles, with one entry/exit door per tower.
- Systems with more than 40 vehicles are possible, but vehicle retrieval time increases, making them less preferable.
- Systems with fewer than 40 vehicles are possible, but the cost per parking space increases, making them less preferable.
- Towers can be arranged front-to-back or side-by-side, like LEGO blocks, to create larger capacities.
- **Space Requirements & Dimensions:** A 40-vehicle TOWER PARK system requires a 10m x 10m construction area, with a 10m x 10m foundation and an 8m x 8m superstructure; an 80-vehicle system requires an 18m x 10m construction area, with an 18m x 10m foundation and a 16m x 8m superstructure; a 160-vehicle system requires an 18m x 18m construction area, with an 18m x 18m foundation and a 16m x 16m superstructure; a 40-vehicle system has a total structure height of 46m, which varies proportionally for different capacities.

| Capacity     | Construction Area | Foundation Dimensions | Superstructure Dimensions | Total Height |
|--------------|-------------------|-----------------------|---------------------------|--------------|
| 40 vehicles  | 10m x 10m         | 10m x 10m             | 8m x 8m                   | 46 m         |
| 80 vehicles  | 18m x 10m         | 18m x 10m             | 16m x 8m                  | Varies       |
| 160 vehicles | 18m x 18m         | 18m x 18m             | 16m x 16m                 | Varies       |

- If the construction site allows for basement structures, the TOWER PARK system can be partially built underground. In this case, entry/exit points are positioned at intermediate levels, reducing the above-ground height accordingly.
- The exterior can be tailored to blend with surroundings or match architectural preferences, using materials such as glass, sandwich panels, aluminum composite, or trapezoidal sheet cladding.
- The TOWER PARK system is equipped with fire suppression systems in compliance with fire safety regulations. Depending on customer preference, hydrant-based or gas-based fire suppression systems can be installed.



**DOKA AUTOMATED PARKING SYSTEMS INC.**

**Address:** Merve Mh. Atatürk Cd. No:322 34791

Sancaktepe / İstanbul

**Tel:** 0 216 311 10 46

**Fax:** 0 216 420 96 95

**Factory Address:** Kargalıhanbaba Mevkii Sakarya 2.

OSB 3 no.lu yol No:12 54300 Hendek / SAKARYA

**Tel:** 0 264 654 59 26

**Fax:** 0 264 654 59 27

**E-mail:** [do-ka@do-ka.com](mailto:do-ka@do-ka.com)

**Website:** [www.do-ka.com](http://www.do-ka.com)